

October 2024

YOU SAID,, WE DID!



For Brokers

Here at Melton for Brokers, feedback plays a vital part in ensuring our continuous quest for improvement, so when our brokers talk, we listen – whether it be from our broker surveys or general feedback from conversations with our people, we take on board each and every idea and query.

This edition of You Said, We did talks about the enhancements we've made of the back off these conversations recently and how we can help turn more blips into DIPs!

BTL
Maximum
Loan amount
increased to

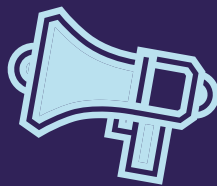
£1m

We are now able to assess self-employed applicants using **2 years trading figures for affordability across all self-employed applications** for standard residential cases up to a maximum **95% LTV**



INTEREST ONLY

We have **removed the standard £175k equity requirement** for non-downsizing interest only applications



We are now able to **accept** applicants with **1 years accounts** where they have been in the **same line of work for a minimum of 12 months** previously and have a reason for going self-employed

This will be covered through a separate and specialist range of products for these cases up to 75% max LTV.

These small tweaks to criteria and latest product launches compliment our already diverse range of niche criteria and innovative products.

Product Ranges

- Residential up to 95% LTV
- Shared Ownership 95% of share
- Self-build range up to 75% LTV
- BTL range including Standard, Holiday, Consumer & Family BTL
- Credit Repair range up to 70% LTV for secured missed payments, CCJ's, defaults, IVA/DMP etc

Criteria Niches

- No credit scoring on prime range
- Manual Underwriting approach
- Earned income used to age 80 for non-manual job roles
- FTB/FTL & non-owner occupiers
- BTL affordability based on rental
- No min income on Interest-only
- Self-build direct specialists

Want to know more?

To find out more about our products and criteria, visit our website themeltonbrokers.co.uk and register today for all our latest news and product launches.

Have a case to discuss?

Call our dedicated Sales Team on **01664 414144 (option 1)**